

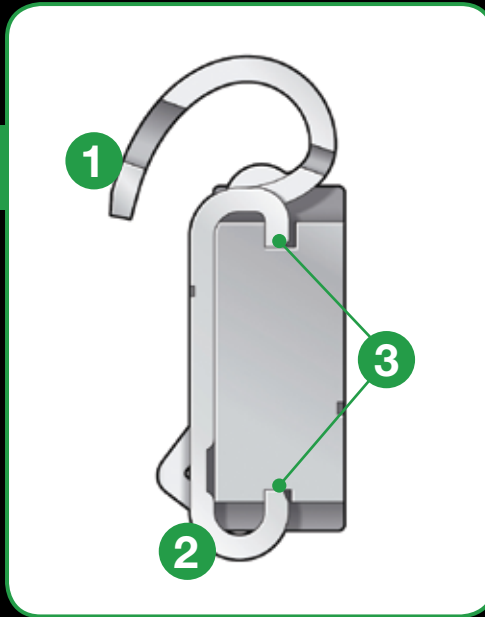
# TRAXLOK™ ...steel weight innovation

Made in the EU

## 100% STEEL

The unique TRAX-LOK™ design locks the weight body securely to the clip. The clip and weight body are assembled using high speed automation.

Steel is a more environmental balance weight solution, widely used by USA and Japanese Original Equipment.



- 1 Proven & reliable Trax® quality clip
- 2 The rounded clip makes fitting easy
- 3 TRAX-LOK™ design to hold the weight body securely in place

## 150C Universal weight for steel wheels

For steel wheels, Trax® has invented the CAM-BACK™ solution giving universal fitment with high levels of weight retention. Plastic coated to OE levels of corrosion resistance. Made from steel.

### CAM-BACK™ design benefits

#### TOP CAM

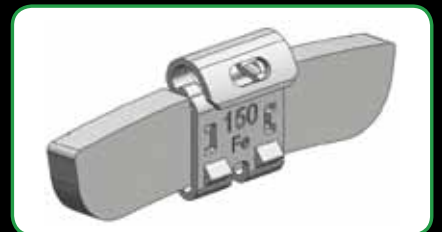
SAFETY.  
The top cam locks the weight on the rim

#### BOTTOM CAM

RETENTION.  
The cam forces the weight away from the rim which opens the clip to give high levels of retention



Patents and design registrations applied for



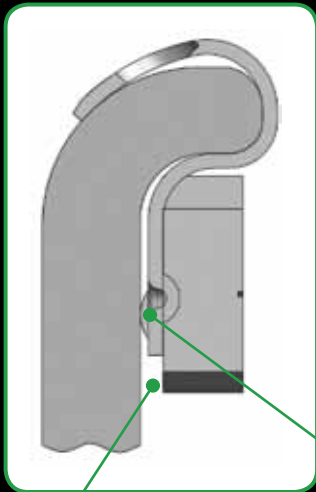
Trax® 150C series – universal weight for steel wheels

Sizes: 5/50g in 5g increments

**TRAX**  
balance weight technology

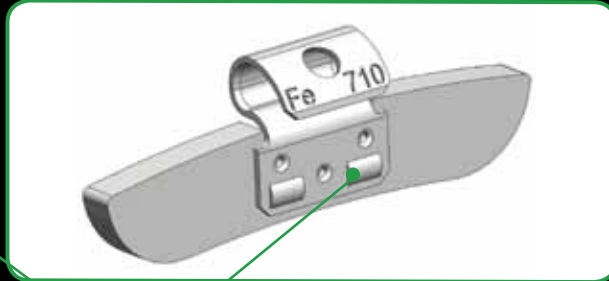


# 710C Universal weight for alloy wheels



1

The gap allows air to circulate around the back of the weight reducing the risk of corrosion.



2

The **CAM-BACK™** design improves weight retention by opening the clip on fitment and increasing the grip.



*Patents and design registrations applied for*

## CAM-BACK™ benefit

Sizes: 5/50g in 5g increments

## Steel adhesive weights

Trax® has a wide range of steel adhesive weights available.

Your lead-free choice – over 50 million steel adhesive weights sold by Trax® worldwide.



## The Trax® brand

Trax® is one of the world's leading balance weight manufacturers, supplying weights to Original Equipment and aftermarket customers.

Recognised in over 40 countries worldwide, the Trax® brand represents excellent customer service and quality.

**TRAX**  
balance weight technology

Trax JH Ltd . 66 Mochdre Enterprise Park . Newtown . Powys . SY16 4LE . UK

Tel: +44 (0) 1686 610 169 . Fax: +44 (0) 1686 628 959

Email: sales@traxjh.com . [www.traxjh.com](http://www.traxjh.com)

© Trax JH Ltd May 2010